

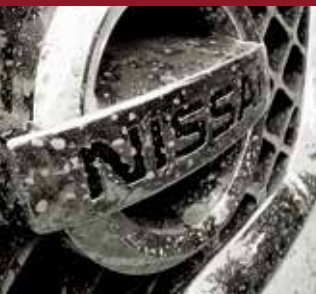


Innovation  
that excites

**NP300**  
**FRONTIER**



As long as there's an adventure on the horizon, Nissan will be out there leading the way. With 14 million Pickup owners blazing trails in 180 DIFFERENT COUNTRIES around the world, the legacy of reliability and innovation powers on.



# 80 YEARS OF TOURS

0  
RS  
UGH



A dark, high-contrast photograph of the front of a Nissan Frontier SUV. The car is the central focus, with its headlights, grille, and bumper visible. The text is overlaid in white, bold, sans-serif font. The background is dark and slightly blurred, suggesting an outdoor setting.

# TOUGH. SMART.

READY FOR THE UNEXPECTED.

NP300  
FRONTIER

# INTRODUCING THE ALL-NEW NISSAN NP300 FRONTIER.

We've been building strong, dependable pickups longer than you've been driving them. And at every turn, we've ridden the edge of innovation to deliver what you want. A tested and proven fully boxed frame. A world-class engine. Go-anywhere 4x4 command. Now it's time to experience the excitement of the next generation of trucks. Where a heritage of tough meets premium ride comfort, smart technologies, and sleek, modern styling. Taking you from a day on the job straight to a night on the town without missing a beat. The **all-new Nissan NP300 Frontier**. Tough. Smart.





# THE PICKUP YOU CAN TRUST, RIGHT DOWN TO ITS CORE.

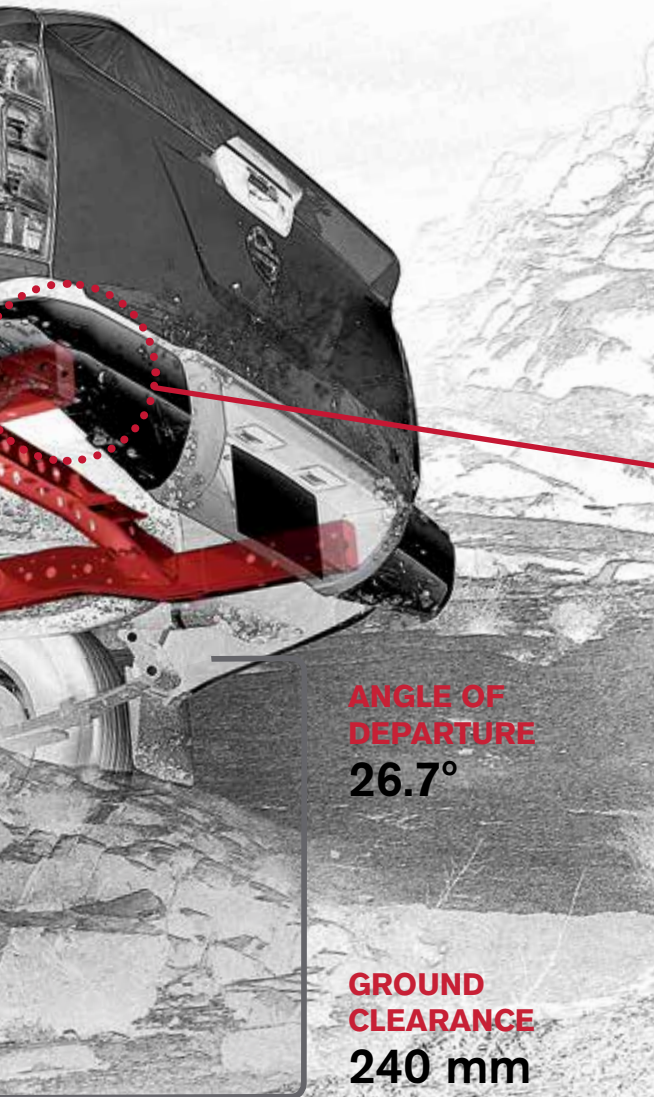
It's OK to judge a pickup by its core. We do. And with a full-length, fully boxed ladder frame, the **all-new Nissan NP300 Frontier** has proven to be one of the toughest pickups on the road. Exceptional angles of approach and departure allow it to handle roads with a lateral tilt of up to 32.2 degrees, with all components tucked up under the frame for increased ground clearance. And on- or off-road, you'll experience a smooth and comfortable ride from the steel double-wishbone front suspension and a MultiLink rigid axle rear suspension.

**ANGLE OF  
APPROACH**

**32.2°**







**ANGLE OF  
DEPARTURE**  
26.7°

**GROUND  
CLEARANCE**  
240 mm



## FULLY BOXED. FULLY CAPABLE.

The fully boxed ladder frame is made with high-tensile strength steel in strategic areas for improved structural rigidity, making it far superior to the 3-sided open C-shape rails found on other pickups. This rugged material is also stronger than conventional steel for increased torsional stiffness to deliver enhanced performance, on- and off-road.

# CLIMB, CRAWL AND POWER YOUR WAY THROUGH.

The **all-new Nissan NP300 Frontier** and its superior technology, including the 4x4 Shift-on-the-fly, will give you all the confidence you need to take any short cut you want.



## Hill Start Assistance (HSA)

HSA holds the vehicle stationary on an incline for about 3 seconds, giving you time to remove your foot from the brake and accelerate smoothly without rolling back.



## Shift-on-the-fly 4-Wheel Drive

At speeds up to 60 km/h, this feature enables you to change between 2WD and 4H at the turn of a switch.



## Limited Slip Differential (LSD)

This cutting-edge technology prevents slippage by applying more torque to whichever wheel has the firmest grip on the road surface. This increases vehicle control and stability.



### **Electronic Locking Rear Differential**

This delivers the same amount of power to both rear wheels to boost traction and keep you moving.



### **Hill Descent Control (HDC):**

HDC limits the speed to maximum 25 km/h while going down a steep grade, depending on hill's slope and/or traction conditions. Together with the ABS and EBD brake systems, it controls the braking of each wheel individually.



## SHOW YOUR FINESSE THROUGH EVERY TURN.

What if the most rugged pickup in the off-roads could ride as smoothly as many sedans do on the highway? Load up your family or grab a few friends and find out. Experience the smooth and comfortable ride that comes with a double wishbone front suspension and MultiLink with rigid axle rear suspension found in the 5-passenger Double Cab. It's as capable in the off-roads as it is smooth on the paved ones. So go ahead and detour with confidence.



4x4  
FRONTIER

# DEVOURS ROADS. SIPS PETROL.

The sign of a truly modern pickup? One that shows how power, acceleration and fuel efficiency can not just coexist, but thrive. The **all-new Nissan NP300 Frontier** offers a 2.5L engine that does that, thanks to race-proven engineering that helps squeeze the most performance out of every drop of fuel. For example, low-friction components mean the engine uses less energy to do its job, while improved aerodynamics helps the pickup move through the air more efficiently.

## YD25 Diesel

| TYPE | POWER (HP)      | TORQUE (NM)     |
|------|-----------------|-----------------|
| HIGH | 188 @ 3,600 RPM | 450 @ 2,000 RPM |
| LOW  | 161 @ 3,600 RPM | 403 @ 2,000 RPM |



NP300  
FRONTIER

# SERIOUSLY CAPABLE.

Anything can come along. Because capable payload capacity is engineered right into the **all-new Nissan NP300 Frontier**, starting with its full length, fully boxed ladder frame. Add to that heavy duty components, including braking and cooling systems, plus plenty of power and low end torque, and you're ready to carry some serious weight. Up to 1 ton with the 188 hp 2.5L turbo Diesel engine.







# LOAD UP OUR MOST VERSATILE PICKUP BED EVER

We know every adventure comes with its own special gear. That is why besides the payload capacity you need to load up the **all-new Nissan NP300 Frontier** to its fullest, we added a 12V power outlet, right into the box and ready for whenever you need it.







The spacious interior of the **all-new Nissan NP300 Frontier** is perfectly adapted to the needs and lifestyle of its drivers, making it a more convenient, comfortable and functional vehicle for work.

We take care of every detail to make you feel comfortable and ready to fully enjoy your driving experience.



Oversized pockets located in the driver and passenger doors offer ample, easy-to-access storage.



High-capacity glove compartment is ideal for pens, pencils, and other important documents.

## STORE IT. HIDE IT. LOCK IT. LOVE IT.

A thoughtfully designed, flexible interior with lots of storage is as important for work as it is for play. Find a spot for your stuff underneath the rear passenger seats, in the side pockets, inside the generous glove compartment, and inside the large centre console. Thirsty? You'll find cup holders almost everywhere you look: mounted in the dash, next to the front seats, in the rear, and even designed into the door pockets.

The centre console includes large cupholders and a deep covered bin for items you want close at hand but out of sight.

Storage trunks conveniently located under the rear seats are perfect for tools you want to keep concealed.

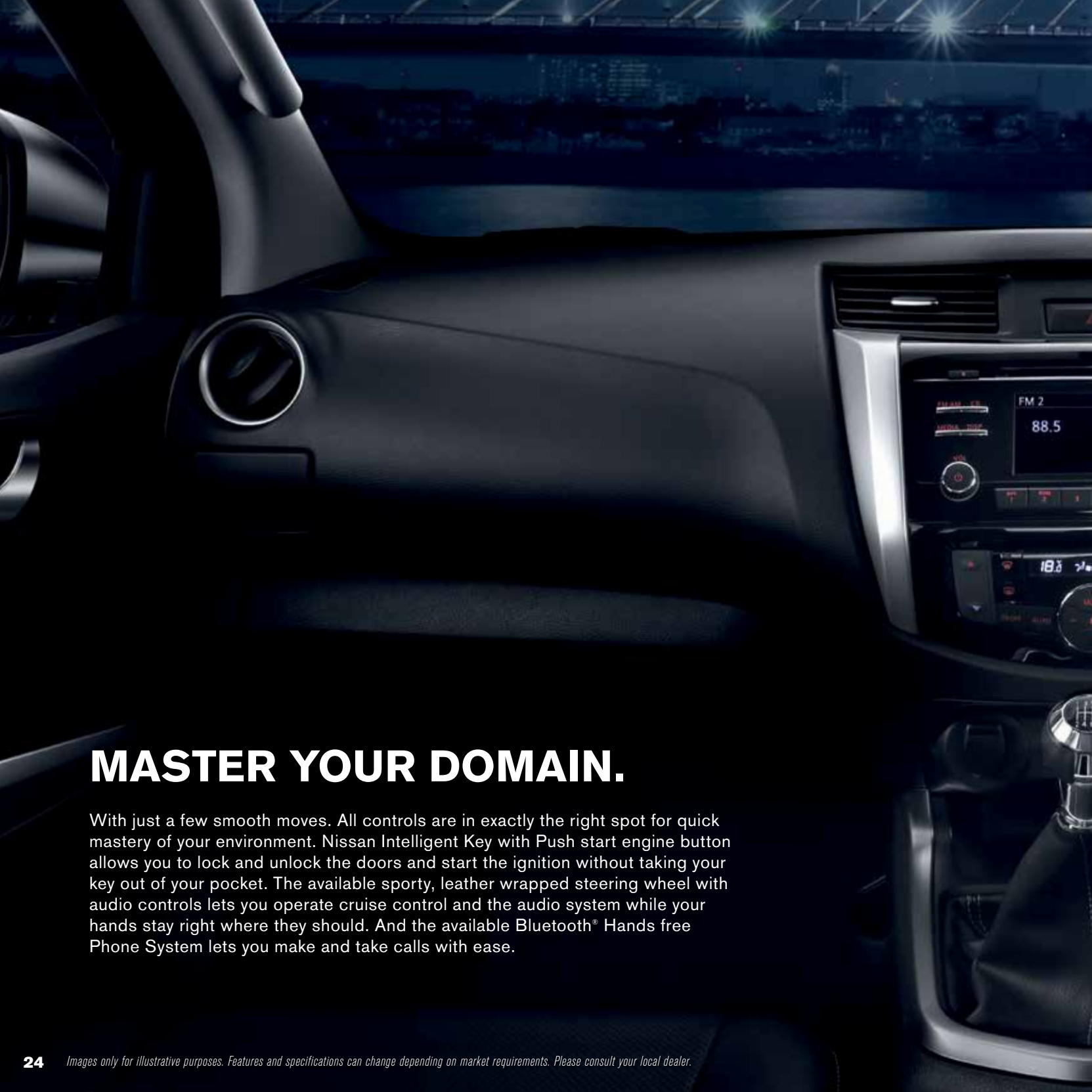






## RIDE FIRST CLASS EVERY DAY.

In the **all-new Nissan NP300 Frontier**, you'll find unexpected comfort and space from every seat. Up front, astronaut-inspired zero-gravity seats create neutral posture and improved blood flow to help make those long rides a lot more comfortable. Plus, Dual Zone automatic temperature control means you and your front passenger can each keep things as cool or warm as you like, while circular vents pinpoint exactly where you want the air to go – which helps out everyone on board. And if you'd rather opt for a little fresh air, the power rear sliding window is just the push of a button away.



## MASTER YOUR DOMAIN.

With just a few smooth moves. All controls are in exactly the right spot for quick mastery of your environment. Nissan Intelligent Key with Push start engine button allows you to lock and unlock the doors and start the ignition without taking your key out of your pocket. The available sporty, leather wrapped steering wheel with audio controls lets you operate cruise control and the audio system while your hands stay right where they should. And the available Bluetooth® Hands free Phone System lets you make and take calls with ease.





NISSAN ADVANCED DRIVE ASSIST™ DISPLAY

# INNOVATION THAT'S RIGHT IN FRONT OF YOU.

With so much going on around you, it's easy to lose sight of what's most important: driving. From fuel economy to song tracks to turn by turn navigation, the Advanced Drive Assist™ Display serves up info right in front of you, helping to minimize time looking away. Plus, its intuitive 3D depth and tilt design helps you take it all in quicker. So you can focus on what really matters.



10:44 PM

Trip  
Distance

30.6 km

Time  
8:20

P

342 km  
30.6  $\Delta$

10:44 PM

Fuel  
Economy

Average 10.0 km/l



P

342 km  
30.6  $\Delta$

Speed

50 km/h

42 km

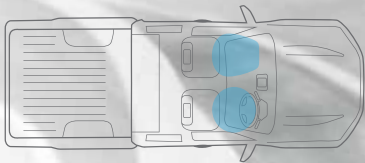
30.6  $\Delta$



# NISSAN SAFETY SHIELD® PHILOSOPHY

## SURROUND YOURSELF WITH CONFIDENCE.

Nissan Safety Shield® is a comprehensive approach to safety that guides the engineering and development of every vehicle we make.



### 2 Standard Air Bags.

**Brake Assist (BA)** helps apply maximum braking force if it detects hard braking and senses you are in an emergency situation.

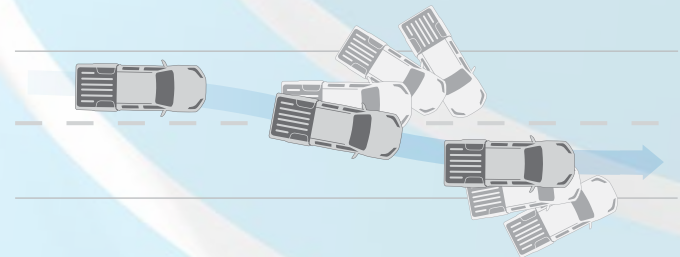
**Anti-lock Braking System (ABS)** helps you maintain steering control around obstacles while braking heavily.

**Electronic Brake Distribution (EBD)** sends extra force to the rear brakes when you have additional weight of passengers or cargo in the back.



### Rear View Camera

This system will help you to expand your field of vision when driving in reverse.



**Vehicle Dynamic Control (VDC)** helps you maintain your steered path.



SAFETY SHIELD

**A BEAUTY THAT'S  
STILL A BEAST.**







Fog lamps



Truck bar



Mirror protector



Side steps



Exhaust tube finisher



Mirror w/ Rear View Camera



Back sonar sensor



# ACCESORIES



# DEFINE YOURSELF



**Black**

**Gray**

**Silver**

**Savannah**

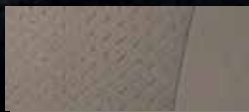
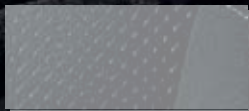
**White**

## Seat Material

Leather



Cloth





**White**

**Dark  
Blue**

**Dark  
Brown**

# SPECIFICATIONS

| Body                            |                           | Double cab   |             |             |             |  |
|---------------------------------|---------------------------|--------------|-------------|-------------|-------------|--|
| Axle type                       | 4X2                       | 4X2          | 4X4         | 4X4         | 4X4         |  |
| Grade                           | SE                        | XE           | XE          | XE          | LE          |  |
| Engine                          | YD25                      |              |             |             |             |  |
| Fuel                            | Diesel                    |              |             |             |             |  |
| Displacement (L)                | 2.5                       |              |             |             |             |  |
| Power (hp @ rpm)                | 161 @ 3,600               | 161 @ 3,600  | 161 @ 3,600 | 161 @ 3,600 | 188 @ 3,600 |  |
| Torque (Nm @ rpm)               | 403 @ 2,000               | 403 @ 2,000  | 403 @ 2,000 | 403 @ 2,000 | 450 @ 2,000 |  |
| Engine                          |                           |              |             |             |             |  |
| Transmission                    | 6 MT                      | 7 AT         | 6 MT        | 7 AT        | 7 AT        |  |
| Gear ratios (-1) 1st            | 4.685                     | 4.886        | 4.685       | 4.886       | 4.886       |  |
| 2nd                             | 2.478                     | 3.169        | 2.478       | 3.169       | 3.169       |  |
| 3rd                             | 1.623                     | 2.027        | 1.623       | 2.027       | 2.027       |  |
| 4th                             | 1.207                     | 1.411        | 1.207       | 1.411       | 1.411       |  |
| 5th                             | 1                         | 1            | 1           | 1           | 1           |  |
| 6th                             | 0.808                     | 0.864        | 0.808       | 0.864       | 0.864       |  |
| 7th                             | -                         | 0.774        | -           | 0.774       | 0.774       |  |
| Reverse                         | 4.709                     | 4.041        | 4.709       | 4.041       | 4.041       |  |
| Standard final drive ratio (-1) | 3.538                     | 3.357        | 3.692       | 3.357       | 3.357       |  |
| Steering                        |                           |              |             |             |             |  |
| Front suspension                | Double wishbone           |              |             |             |             |  |
| Rear suspension                 | MultiLink with rigid axle |              |             |             |             |  |
| Wheels                          |                           |              |             |             |             |  |
| Tire size                       | 205 / R16 C               | 255 / 70 R16 |             |             |             |  |
| Road wheels                     | Steel                     | Alloy        |             |             |             |  |
| Brakes                          |                           |              |             |             |             |  |
| Front                           | Ventilated disc           |              |             |             |             |  |
| Rear                            | Drum                      |              |             |             |             |  |
| Dimensions (mm)                 |                           |              |             |             |             |  |
| Over All Length (OAL)           | 5,255                     | 5,255        | 5,255       | 5,255       | 5,255       |  |
| Over All Width (OAW)            | 1,790                     | 1,850        | 1,850       | 1,850       | 1,850       |  |
| Over All Height (OAH)           | 1,785                     | 1,795        | 1,810       | 1,810       | 1,840       |  |
| Wheel Base (WB)                 | 3,150                     | 3,150        | 3,150       | 3,150       | 3,150       |  |
| Weights & capacities            |                           |              |             |             |             |  |
| Fuel tank (L)                   | 80                        |              |             |             |             |  |
| Gross vehicular weight (kg)     | 2,910                     |              |             |             |             |  |
| Payload (kg)                    | 1,153                     | 1,142        | 1,075       | 1,063       | 1,031       |  |

# EQUIPMENT

| Body   | Double cab |        |     |     |     |
|--|------------|--------|-----|-----|-----|
|  | Axle type  | 4X2    | 4X2 | 4X4 | 4X4 |
|  | Grade      | SE     | XE  | XE  | LE  |
|  | Fuel       | Diesel |     |     |     |
| <b>Interior</b>  |            |        |     |     |     |
| Center console w/ armrest, cup holder, rear ventilation & 12V power outlet | •          | •      | •   | •   | •   |
| Glove box  | •          | •      | •   | •   | •   |
| Map lamp, sunglasses holder, mood light & microphone                       | —          | •      | •   | •   | •   |
| Welcome light  | •          | •      | •   | •   | •   |
| Chromed interior handle  | —          | •      | •   | •   | •   |
| Cloth seats  | •          | •      | •   | •   | —   |
| Leather seats  | —          | —      | —   | —   | •   |
| Number of manual seat functions for driver                                 | 6          | 6      | 6   | 6   | —   |
| Number of electrical seat functions for driver                             | —          | —      | —   | —   | 8   |
| Rear bench seat w/ flip up function  | •          | •      | •   | •   | •   |
| Number of manual positions for passenger                                   | 4          | 4      | 4   | 4   | 4   |
| Steering wheel, shift knob & parking brake in leather                      | —          | —      | •   | •   | •   |
| Digital clock in display   | •          | •      | •   | •   | •   |
| Manual tilt steering wheel   | •          | •      | •   | •   | •   |
| Central door locking   | •          | •      | •   | •   | •   |
| <b>Exterior</b>  |            |        |     |     |     |
| Body color over fender   | —          | •      | •   | •   | •   |
| Body color front bumper  | •          | •      | •   | •   | •   |
| Chromed rear bumper  | •          | •      | •   | •   | •   |
| Chromed front grille   | •          | •      | •   | •   | •   |
| Front spoiler  | •          | •      | •   | •   | •   |
| Step rail  | —          | •      | •   | •   | •   |
| Silver roof rail   | —          | —      | —   | —   | •   |
| Rear mudguards   | •          | •      | •   | •   | •   |
| Chromed outside door handle  | —          | •      | •   | •   | •   |
| Front tow hooks  | •          | •      | •   | •   | •   |
| Green tinted glass w/ UV & heat protection                                 | •          | •      | •   | •   | •   |
| Rear window defroster w/ timer   | •          | •      | •   | •   | •   |
| Black side mirrors   | •          | —      | —   | —   | —   |
| Chrome side mirrors  | —          | •      | •   | •   | •   |
| Side mirrors w/ manual folding & electrical adjustment                     | •          | •      | •   | •   | —   |
| Side mirrors w/ electrical folding & electrical adjustment                 | —          | —      | —   | —   | •   |
| Side mirrors w/ side turn signal lamp (LED)                                | —          | —      | —   | —   | •   |
| Manual dimming rearview mirror   | •          | —      | —   | —   | —   |
| Auto dimming rearview mirror w/ digital compass                            | —          | •      | •   | •   | •   |
| Halogen headlamps  | •          | •      | •   | •   | —   |
| LED headlamps  | —          | —      | —   | —   | •   |
| Nissan LED signature in headlamps  | —          | —      | —   | —   | •   |
| Number of headlamps  | 2          | 2      | 2   | 2   | 4   |

| Body  | Double Cab |        |     |     |     |
|---|------------|--------|-----|-----|-----|
|   | Axle type  | 4X2    | 4X2 | 4X4 | 4X4 |
|   | Grade      | SE     | XE  | XE  | LE  |
|   | Fuel       | Diesel |     |     |     |
| <b>Exterior</b>   |            |        |     |     |     |
| Headlamps w/ auto off function  | —          | •      | •   | •   | •   |
| 2 variable speed front wipers (intermittent & mist)                     | •          | •      | •   | •   | •   |
| Front washer nozzle   | •          | •      | •   | •   | •   |
| <b>Box</b>  |            |        |     |     |     |
| Inner box hooks (4)   | •          | •      | •   | •   | •   |
| 12V power outlet  | •          | •      | •   | •   | •   |
| <b>Comfort &amp; technology</b>   |            |        |     |     |     |
| Front & rear power window w/ one touch for driver (up & down)           | •          | •      | •   | •   | •   |
| Audio system w/ AUX / USB port  | •          | —      | —   | —   | —   |
| 5" color display LCD audio system w/ AUX / USB port                     | —          | •      | •   | •   | •   |
| Number of speakers  | 6          | 6      | 6   | 6   | 6   |
| Hands free phone system w/ Bluetooth* & voice recognition               | —          | •      | •   | •   | •   |
| Manual A/C w/ pollen filter   | •          | •      | •   | •   | —   |
| Dual zone auto A/C w/ pollen filter                                     | —          | —      | —   | —   | •   |
| Rear heater duct  | •          | •      | •   | •   | •   |
| Advanced Drive Assist™ monochromed display                              | •          | —      | —   | —   | —   |
| Advanced Drive Assist™ color display 3D                                 | —          | •      | •   | •   | •   |
| Remote keyless entry function lock / unlock                             | •          | •      | •   | •   | •   |
| Intelligent key (iKey™)   | —          | —      | —   | —   | •   |
| Electromagnetic fuel filler lid opener                                  | •          | •      | •   | •   | •   |
| Push start engine button  | —          | —      | —   | —   | •   |
| Cruise control  | —          | •      | •   | •   | •   |
| <b>Safety</b>   |            |        |     |     |     |
| Driver & assist airbags   | —          | •      | •   | •   | •   |
| ABS & EBD systems   | —          | •      | •   | •   | •   |
| Brake Assist (BA)   | —          | •      | •   | •   | •   |
| LSD: Limited Slip Differential  | —          | —      | —   | —   | •   |
| Hill Descent Control (HDC)  | —          | —      | —   | —   | •   |
| Hill Start Assist (HSA)   | —          | —      | —   | —   | •   |
| Child safety rear door lock system                                      | •          | •      | •   | •   | •   |
| Immobilizer   | •          | •      | •   | •   | •   |
| Alarm   | •          | •      | •   | •   | •   |
| LED high mounting stop lamp   | •          | •      | •   | •   | •   |
| Rear View Camera  | —          | •      | •   | •   | •   |
| Driver & assist seat belt 3 point ELR w/ pre tensioners & load limiters | —          | •      | •   | •   | •   |

• = Standard equipment  
 - = Not available



## 10 REASONS TO CHOOSE THE ALL-NEW NISSAN NP300 FRONTIER

More **ground clearance** and better approach and departure angles

4 times stronger **ladder-frame chassis** with double "C" structure

Hill Start Assistance (**HSA**) and Hill Descent Control (**HDC**)

**MultiLink** with rigid axle rear suspension system

**2.5 L** engine with 6MT or 7AT

New **tough and smart** design

**Rear View Camera** will help you to expand your field of vision when driving in reverse.

Push start engine button and Intelligent Key (**iKey\***)

View vital driving data using the **Advanced Drive Assist™ Display**

Brake assist (**BA**), Anti-lock Braking System (**ABS**) and Electronic Brake Distribution (**EBD**)

*Features and specifications can change depending on market requirements. Please consult your local dealer.*



### **Nissan. Innovation that excites.**

Because innovation is more than a feature. Nissan delivers exciting benefits that emotionally engage and surprise our customers.

We are engaged to offer passionate driving and emotive design to our customers with the most creative executions, superior agility and responsiveness in every vehicle we build.

We believe in the power of cars to excite. That is why, we put the best innovative ideas into every model we design to bring the most exciting driving experience no matter what their path or destiny may be.

That is what has distinguished Nissan since the beginning. We build our own future and are committed to get you to places where no one has ever been to with style.



**Innovation  
that excites**